

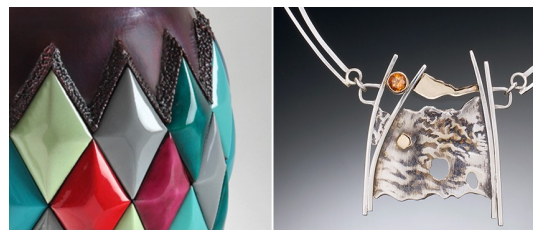
[View this email in your browser](#)



## IN THIS ISSUE

- [President's Letter](#)
- [Important Dates](#)
- [Upcoming CMAG Programs](#)
- [CMAG Spring Show & Sale - Gathering of the Guilds](#)
- [CMAG Workshops](#)
- [Member Spotlight](#)
- [Giving Back](#)
- [Opportunities](#)
- [Guild Business](#)

<a href="#">IMPORTANT DATES</a>	
<b>March CMAG Meeting</b>	<b>3/20/18</b>
<a href="#">"Crossings" Application Deadline</a>	<b>3/31/18</b> <b>(until full)</b>
<b>April CMAG Meeting &amp; <a href="#">CASA Bead Deadline</a></b>	<b>4/17/18</b>
<a href="#">CMAG Spring Show/ Gathering of the Guilds</a>	<b>4/27-29/18</b>
<b>"Crossings" Entries Due</b>	<b>5/11/18</b>
<b>May CMAG Meeting</b>	<b>5/15/18</b>
<a href="#">Eric Burriss Mokume Gane Workshop (Registration OPEN)</a>	<b>5/19-21/18</b>



## CROSSINGS

A CMAG AND SMG MEMBER EXHIBITION



<a href="#">SNAG Conference &amp; Crossings Exhibit</a>	<b>5/23-26/18</b>
---	-------------------

**Crossings** will be staged at the Annie Meyer Gallery as part of SNAG. May 23-26, 2018.

---

## [President's Letter](#)

Bummer about the February meeting being canceled, but time marches on and CMAG has so much going on this Spring:

- We will have **postcards** for the [Spring Show](#) available at the general meeting, so make sure you grab some to hand out. A digital version is available [here](#).
- So far, we only have two people registered for the [Eric Burris, Mokume-Gane](#) workshop on May 19<sup>th</sup> -21<sup>st</sup>. We need to get at least 6 people by April 30<sup>th</sup> to make it happen so if you're thinking about it, don't dillydally and please spread the word to your networks.
- **SNAG** is offering CMAG members a \$25 discount on the Portland conference registration if we have a group of 8 or more going. All I need is a list of at least 8 CMAG members and SNAG will give me a discount code you can enter as you register. Already registered? No worries, I will submit your name to SNAG and they will refund you the \$25. Just let me know ASAP – [allenmetalarts@gmail.com](mailto:allenmetalarts@gmail.com). They are making this offer to Seattle Metals Guild members as well, but if you're a member of both you can only use the code once. You do not have to be a SNAG member, but they do encourage joining as you will save even more money on the price of the conference.
- Speaking of SNAG, don't forget our "[Crossings](#)" show deadline is March 31<sup>st</sup>. This isn't a competition, but...way more Seattle Metal Guild members have signed up so far. Oregon, represent!

Finally, I want to thank Rachel Morris for taking over as newsletter editor, and you will notice lots of format improvements in this issue. If you haven't had a chance to meet Rachel yet, the next meeting will be a perfect opportunity as she will be presenting "Considerations when selling your work via craft shows".

- Mandy Allen, President

---

**April: Traditional Japanese Metalsmithing Techniques - Nunome Inlay and Gilding** (Momoko Okada)

**Nunome** means "woven cloth texture." Using special chisels and a hammer to create a cross-cut pattern on the surface of base metal, we then apply metal foil to the pattern. This technique was used on sword fittings in Japan, and more recently to decorate vases or incense burners. Here's a [trailer](#) about it.

**Gilding Technique:** This will cover the application process and making of metal flakes for a variety of Japanese colored silver leaf to add wonderful colors to finished metal jewelry!

*"Wind" - Incense Burner by [Momoko Okada](#)*





## The Gathering of the Guilds / CMAG Spring Show Update

We are off to a strong start this year! We will be sending out welcome packets shortly to all show participants. We may have a few small spaces still open as we finalize the floor plan but as of right now we are full.

We offered 5 emerging artists booths this year and they all filled up quickly with new artists! We are really excited to have this new feature so that we can expose new artists and talent to the show scene and really look forward to seeing their work and interest in CMAG.

We have a lot of new people this year! So if you are a show veteran and you see a new face introduce yourself and offer to answer any questions our new members may have.

**ADVERTISING:** We will have post cards and posters ready at the next CMAG general meeting. As always, we are pitching in to the GOTG advertising budget which will be over 20k this year, so that means lots of great advertising again for this show.

**SOCIAL MEDIA:** We recently processed all the information from the feedback forms we get during the GOTG show and what we found is that most people hear about the show via friends and social media. So if all participants can please start posting their work on Instagram and Facebook and tagging #GOTG or [Gathering of the Guilds](#), it'll bring more awareness to this event. Help out by sharing the [attached postcard](#).

**GIVE BACK:** We will be having [CASA](#) beads again this year at the Spring Show. Mary Wong kindly heads this up each year. This is a non-profit organizations aimed at helping impoverished families in Oregon by helping to raise funds through the donation and sales of high quality artist made jewelry.

**SNACKS:** We will also be having a complimentary snack and coffee table this year. This will be behind Tai Vautier's booth which is located right next to the drinking fountain and has easy access. If artists can bring snacks and home-made goodies to contribute to this then we can make sure it is abundant and varied.

**VOLUNTEERS:** ALL non-show MEMBERS: Please consider volunteering any amount of time during the show to help us out. This show takes a tremendous amount of organizing and help to pull it off. Every year we are short on volunteers that can help at the show itself. We always need more booth sitters and helpers in the Gallery and Silent Auction. If you are related to or have friends that are participating artists and you can help us out with some volunteer hours your hours can be directly donated to your artist friend or family member to bring down their commission rate! We could use all the help we can get.

We are looking forward to a great show this year and we are so excited about our emerging artists and all this incredible talent under one roof again!

All my best,  
Tai Vautier  
Spring Show Chair



### [Mokume Gane Ring Workshop with Eric Burris May 19-21, 2018](#)

**Registration open now!**

Eric has been working with the Mokume Gane technique for 15 years. Drawn to the organic

---

wood-like patterns, it is the primary material in his jewelry and the focus of his workshops. His goal is teaching jewelers and metalsmiths a low-tech, low-cost, and efficient method to making traditional diffusion bonded Mokume Gane. Fees - \$400 for CMAG members, \$475 for non-members. Click here for details: <http://cmaguild.org/workshops/>

---



["Poppies" collection - Mandy Allen Metal Arts](#)

## Member Spotlight: Mandy Allen of [Mandy Allen Metal Arts](#)

*Mandy has been a CMAG member for 13 years and is the current President of the Board.*

### **Q: How did you get into metal arts?**

*Mandy Allen:* I went to an arts magnet high school called the Los Angeles County High School for the Arts. We took college level art classes in the afternoon and that's where I took my first jewelry class, along with drawing, painting, ceramics, etc.. I've dabbled in almost everything. I knew when I was going to college, it would be a CA state school, I was going to be an arts major, and that I wanted to investigate metals. I attended Humboldt State University, in Northern California, amongst the redwoods, on the coast.

I'm definitely a 3D person. I like the plasticity level of metal – workable but it gives you some resistance. You have to have a conversation with it. The abstract nature of it drew me. I'm not a very literal, narrative artist. I don't know what I'd paint if I were a

---

painter. I'm drawn to the interaction between the jewelry and the wearer – how it's part of your everyday life.

In college I learned the anodizing technique from my professor (David LaPlantz), who was an excellent teacher. He was focused on building skills but also on the creative expression aspect. Jewelry can be more than a monetary status symbol.

**Q: What was the very first project you worked on?**

*Mandy Allen:* It was a pair of earrings – pierced in brass. I still have one of them, but lost the other one.

**Q: Who has influenced your work and how?**

Arline Fisch. Her book "[Textile Techniques in Metal](#)" – early on, working with the aluminum, I worked on cold connections, and was really into weaving, sewing, rivets. I took a workshop from one of her protégés, then managed to take a workshop with her many years later. Her book is well worn.

More recently, [Betty Helen Longhi](#) and Andrea Harvin-Kennington did a CMAG workshop together. I enjoyed learning another technique, and finding that ability to create more natural, organic shapes, and work more volumetrically, for greater dimension -- a little more grace to my designs.

**Q: Is there anyone you want to study with but haven't had the chance?**

I'm very focused on having my own style. I don't want to get influenced or tempted by other styles. But I also take opportunities as they come to me. I do want to work with Andy Cooperman the next time we get him down here for a surface treatment workshop.

**Q: Can you describe your process when designing a new line or one of a kind piece?**

*Mandy Allen:* I get my inspiration from three places: 1) Botanicals – looking at flower parts, 2) I'm into Japanese and Chinese textile motifs, abstracting botanicals one more step, and 3) I work off existing designs, spinning them in new way, trying another of the thumbnail sketches from the original designs.

A lot of times, I actually start with the color first...I really know I want to do a (specific) combo and think what would look good in that color. I also love the Japanese



Garden – I like the clean lines, the asymmetric but balanced look. I don't want my work to look Asian, per se, but I go to those kinds of sources for inspiration.

**Q: What is one tool you cherish and why?**

*Mandy Allen:* I love my ([NC Black](#)) micro hammers – I like to kiss them, they're so cute. They're so versatile – you can use them for a lot of things. Just the right tool for the job - if you want to get that nice curve, you need the right hammer.

**Q: Where do you sell your work?**

*Mandy Allen:* I sell at [Alberta Street Gallery](#) and the [Bush Barn Art Center](#) (Salem) plus a few other consignment galleries. But mostly I sell at craft shows and a little online (Etsy).

**Q: What is your favorite thing about CMAG?**

*Mandy Allen:* The camaraderie. The social interaction with people of similar interests.

**Q: What's presently on your workbench?**

*Mandy Allen:* My piece for the "Crossings" show – it's about halfway done (hopefully). It's a wall piece. Floral. My husband calls them "Star Trek" flowers. I'm working on a synclastic Mobius strip shape that they'll be placed within.

---

## [Giving Back](#)

---

### **CASA Beads**

Now is the time to start thinking about a very important subject: What bead will you make this year for our CASA neckpieces? Our theme remains "Hearts, Homes and Kids."



In addition to the support we give to this local charity, our neckpieces serve to get CMAG noticed by the community. There are donors who go to these events

---



specifically to see the new CMAG pieces. These people are collectors; there have been actual bidding wars! Everyone who sees our pieces recognizes our name, CMAG, and they usually turn up at our Spring Show to purchase work by the people who made the beads.

MAKE THOSE BEADS! REMEMBER: Beads must be smaller than 1" cubic, and they must have a hole at least 3mm in diameter and be made of metal. NO BEAD IS TOO SMALL! If you have a bead or if you have questions, please call Mary Wong at 503-496-1285 or [mary@triosstudio.com](mailto:mary@triosstudio.com) or bring them to either the March or April meeting. (April meeting is our deadline.)



## CMAG Member Jenn Prochazka Needs Our Support

Not all of you have met Jenn: She is a new member, having moved to the Portland area less than a year ago. Soon after joining CMAG she stepped up to become a member of our board and took on the job of newsletter editor, a job that she sadly had to resign from last month after her husband, Sean Demery, suffered a brain stem stroke, leaving him in a condition called Locked In Syndrome. His body is immobile, paralyzed, with only movement in his eyes. He is completely mentally intact, learning how to breathe on his own again and making progress.

As you can imagine this is an extremely emotionally and financially challenging time for them, please consider making a donation to their Go Fund Me campaign <https://www.gofundme.com/sean-demery-stroke-medical-expenses>

You can also share your support and keep updated on Sean's progress through their Facebook group <https://www.facebook.com/groups/384220205381728/>

### Call for Donations:



## Community Warehouse

Community Warehouse is a local non-profit furniture bank whose mission is to connect donated household furnishings with neighbors in need. The organization has been serving the Portland/Vancouver area since 2001 and has grown to serve over 2800 families annually. Because the Community Warehouse is the only furniture bank in Oregon, it partners with over 200 local agencies to ensure that furniture gets to the individuals with the highest need.

CW relies on private donations for a large percentage of its funding and its main fundraising event is an annual auction called the "Chair Affair". This year's Chair Affair is set for April 21 at the Sentinel Hotel (the old Governor Hotel) in downtown Portland. The event will include both a silent and live auction with an audience of ~350 people. There's more information about the upcoming Chair Affair under the "About" link on the website. <https://www.communitywarehouse.org/>

We are asking CMAG members to consider donating pieces of jewelry in the \$50-\$75 retail value range as part of the Chair Affair fundraiser. If you are interested, contact Kathleen Barker at [kbakermetalwork@comcast.net](mailto:kbakermetalwork@comcast.net) or simply bring your donation to the March general meeting.

---

## Member Opportunities



### **CROSSINGS** A CMAG AND SMG MEMBER EXHIBITION

**Crossings** will be staged at the Annie Meyer Gallery located in the Pearl District at 120 NW 9th Avenue, as part of the Society for North American Goldsmiths (SNAG) annual conference in Portland May 23-26, 2018.

Key Dates:

**March 1st-31st** - Call for Entry, open until filled

**April 22nd** - Deliver work to CMAG general meeting

**May 13th** - Case Design in Portland

**May 22nd** - (4pm-until) Installation at Annie Meyer Gallery

**May 24th** - 5pm-8pm SNAG Gallery Crawl

**May 27th** - De-installation and checkout

**This show will not be juried, rather the first 50 entries from each guild (100 total) will be accepted.** One piece per person, no more than 3 ft. in any direction, unless it is free-standing. Please contact us if you plan to submit a large piece, they will be accepted case-by-case as space allows.

**An image of the actual piece to be displayed is required.** Images should be 1200 x 1200 pixels in dimensions for the application.

**Crossings** will feature works that explore the intersection of diverse disciplines, processes, and media. The show itself is a collaboration between the two guilds – crossing the border between Washington and Oregon. **Pieces should feature two or more processes**, for example, forging and roller printing or wire work and casting. Alternatively, **pieces may work across craft boundaries** such as incorporating ceramics, wood, or glass.

**Collaborations between artists are highly encouraged** but not required. Individual artists will need to find their partners and determine the format of their collaboration. [SMG's Facebook forum](#) is a great place to discuss the show and find partners, particularly if you are interested in collaborating with someone from the other guild. To join the forum, visit our Facebook page and click *Join Group* at the top of the page: <https://www.facebook.com/groups/70785374735/>. Or you can contact Mandy Allen at [allenmetalarts@gmail.com](mailto:allenmetalarts@gmail.com) to be added to a list.

**Pieces are not required to be for sale, but it is encouraged with only a 5% processing commission.** Sales made before the Gallery Crawl on Thursday night will be held and marked with a red dot until after the Crawl reception. Sales made during or after the Crawl will be cash and carry.

**All participants will be required to volunteer at least 2 hours.** There will be a list of options on the registration form for both Seattle and Portland tasks, as well as things that can be done from home. Some tasks are super easy, like Gallery Sitter during the conference, or providing directions during the Gallery Walk.

**Gallery Hours:** Weds - Sat 11am-5:30pm; plus during the gallery crawl Thurs 5-8pm. There will be one person on staff during all open hours, but they do not know much about our field. Thus, volunteer docents needed.

**Pieces need to be delivered to the April 17th CMAG general meeting.** Other arrangements can be made with Mandy Allen.

**Register by filling out the form at this link:**

<https://www.seattlemetalsguild.org/crossings-snag-2018/>

Scroll down to where it says CMAG Members Apply Here

**Use password: metalsmith**

Your guild membership status will be manually verified before your registration is final.



Washington County Artists Open Studios Tour  
October 20 & 21, 2018

Open to artists with a working studio located within Washington County, Oregon. The ninth annual Washington County Artists Open Studios Tour is an opportunity to share your creative space, connect and educate the community about your process of art making, and to show your work.



Participating artists will be listed with a photo of work and artist information in a printed catalog, on the web site, and may be featured on social media sites, in local media and advertising for the event. Participating artists are required to attend meetings, support fundraising and are encouraged to volunteer on one of the organizing and facilitating committees. The Washington County Art Alliance is a 501(c)3 nonprofit.

Artists must agree to be in their studio workspace and prepared to show and demonstrate part of their art making process to the public October 20 and 21, 2018 from 11 am to 5 pm. All work shown must be original and made by the studio artist. Sales are limited to original work or reproductions of the artist's original work.

Information and online registration opens March 1, 2018 at [washcoart.org](http://washcoart.org).

Registration closes May 1, 2018

---

### **SILVERADO PORTLAND JEWELRY BOUTIQUE**

We are looking for a part time Jewelry Sales Associate to join our staff at Silverado Portland Jewelry Boutique! Silverado Portland, located at the very popular Bridgeport Village, is a boutique featuring handcrafted jewelry from local and American designers. We have a creative and close-knit team and are looking to expand by adding on one person who will be available to work 2 days per week, as well as coverage during vacations and holidays (this usually requires 3-4 days per week).

The best candidate will need to be:

- Willing to take direction from supervisors
- Dressed appropriately for the job—we do have a dress code.
- Flexible with hours—weekends and evenings are key, and covering other shifts in case of vacation or illness.
- Able to learn complex processes (don't worry—we make it easy!) for repairs, special orders, inquiries, etc.

Responsibilities:

- Customer service is key; we are here to enhance the customer experience by connecting them with jewelry they love
  - Learn the product story of our jewelry and artists, and be able to communicate that to customers
  - Process register transactions accurately and efficiently
  - Take in customers' special orders and repairs, communicating with them regarding our policies; Follow up when these are completed
-

- Maintain visual integrity with regular cleaning of cases and organizing jewelry; Restocking jewelry as needed.
- Maintain a high level of awareness in regard to loss prevention
- Assist in processing incoming orders by photographing, documenting and pricing merchandise
- Restock supplies, including gift wrap, ribbon, receipts, business cards, bags, etc.
- Open and Close the store, depending on shift
- Maintain records of repairs, special orders, orders

Qualifications:

- 2+ years retail experience; Jewelry sales experience a plus
- Great customer service and positive attitude
- Must be able to work evenings and weekends, as well as around Holidays.
- Experience with computer programs such as Microsoft Office (Word, Excel, Outlook)
- Experience with other software and technology a plus
- Must be able to use numeric cash register and credit card terminal

Education:

- High School Diploma or GED

**Please email your resume and cover letter telling us why you would be the best fit for this position** (applications without a cover letter will not be considered.)

To: [info@silveradoportland.com](mailto:info@silveradoportland.com)

Or bring them in person to:

Silverado Portland

7363 SW Bridgeport Rd.

Tigard, OR 97224

---

## Guild Business

### General Meeting (Monthly)



**When:** General CMAG member meetings are held the third Tuesday of each month, except December. Doors open at 6:45pm, meetings begin at 7:15pm, and adjourn by 9:15pm.

---



**Where:** Room 30 at the [Multnomah Arts Center](#), 7688 SW Capitol Highway Portland 97219.

**What:** Meetings consist of a general business and a short break with refreshments, followed by a program which may be a demonstration of a technique or tool, a slide presentation, a panel discussion, or other presentation of interest to CMAG members. The CMAG Library is open before the meeting and during the break for checking out books and magazines.

**Who:** Meetings are open to CMAG members and their guests.

## Board Meeting

Board meetings are generally held prior to the General Meeting at 6:00 pm in Room 30 at the MAC (same room as the regular meeting). Members are encouraged to attend and contribute.



**Board Members:** Mandy Allen, President; Marsha Sandman, Vice President; Barbara Covey, Treasurer; Madeleine Moore, Secretary; Tai Vautier, Spring Show; Sharon Smith, Programs; Cindy Proctor, Education; Kathleen Baker, Membership; Bob Woods, Webmaster; Marcy Swanson, Refreshments

---

## Newsletter Information

We're looking for news about you! Your shows, gallery openings, event reviews, workshops you've attended or upcoming classes you recommend, even photos

---



of new works are all welcome. Include body text in an email and attach photos (ideally JPEG format) where available. Submit to: [news@cmaguild.org](mailto:news@cmaguild.org)

Upcoming Deadlines (the second Tuesday of each month):

- April issue: April 10th
- May issue: May 8th

*Copyright © 2018 Creative Metal Arts Guild, All rights reserved.*

You are receiving the CMAG newsletter as a current or recent member of the Creative Metal Arts Guild, or as a guild-newsletter exchange recipient.

**Our mailing address is:**

Creative Metal Arts Guild  
P.O. Box 8946  
Portland, OR 97207

[Add us to your address book](#)

[unsubscribe from this list](#) [update subscription preferences](#)



---

This email was sent to <<Email Address>>

[why did I get this?](#) [unsubscribe from this list](#) [update subscription preferences](#)

Creative Metal Arts Guild · P.O. Box 8946 · Portland, OR 97207 · USA

MailChimp